

# Control System Overview

For VRF

User's needs are supported by offering a variety of controls, such as individual control, central control and building management control options.

## Air Conditioning Individual Control



**Wired Remote Controller (Touch panel)**  
UTY-RNRYZ3



**Wired Remote Controller**  
UTY-RLRY



**Simple Remote Controller**  
UTY-RSRY  
UTY-RHRY  
Without operation mode



**Wireless Remote Controller**  
UTY-LNHY



For Duct

**IR Receiver Unit**  
UTB-YWC For Duct



For Cassette For Circular Flow Cassette

**NEW**  
UTY-TRHX For 3D Flow Cassette/Duct  
**NEW**  
UTY-LRHYB1 For Cassette  
UTY-LBHxD For Circular Flow Cassette

## Air Conditioning Centralized Control



**System Controller (Software)**  
UTY-APGXZ1/UTY-ALGXZ1 (Lite edition)

\*1: USB Adaptor: Echelon® U10 USB Network Interface  
\*2: Lite edition is max. controllable 400 indoor units



**Touch Panel Controller**  
UTY-DTGYZ1



**NEW**  
**Central Remote Controller**  
UTY-DCGYZ1



**Group Remote Controller**  
UTY-CGGY



**Network Converter (For Group Remote Controller)**  
UTY-VGGXZ1



## Converter/Adaptor

For external control via BMS/Home Automation Systems

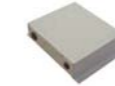
**BACnet® Gateway**  
UTY-ABGXZ1 **Software**



**BACnet® Gateway**  
UTY-VBGX **Hardware**



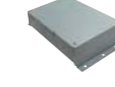
**Network Converter (For LONWORKS®)**  
UTY-VLGX



**MODBUS® Converter For indoor unit**  
UTY-VMSX



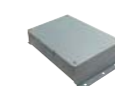
**MODBUS® Converter**  
UTY-VMGX



**KNX® Converter For indoor unit**  
UTY-VKSX



**KNX® Converter For VRF**  
UTY-VKGX



**Wireless LAN Interface**  
UTY-TFSXZ1



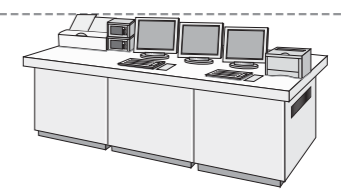
**External Switch Controller**  
UTY-TERX



**Card-key (Locally purchased)**



**BMS/BAS\*3**



**BMS, Home automation system\*3**



\*3: BMS/BAS: Building Management System/Building Automation System

## Converter/Adaptor

For system expansion

**Network Converter (DC power supply)**  
UTY-VTGX



**Network Converter (AC power supply)**  
UTY-VTGXV



**Signal Amplifier**  
UTY-VSGXZ1

