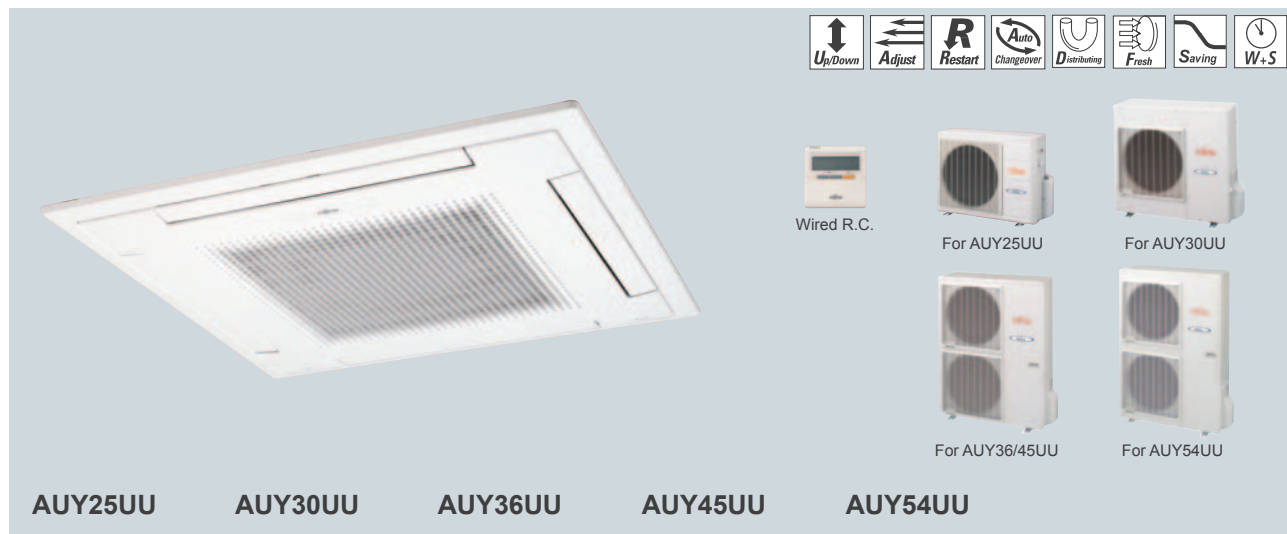


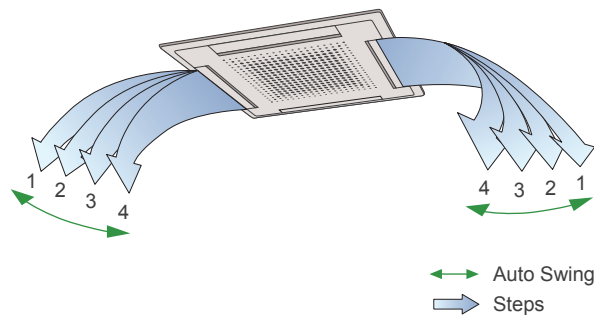
Cassette



Comfortable airflow

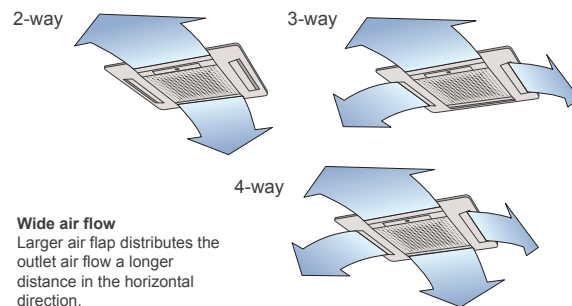
4 step swing

Auto air flow direction and auto swing



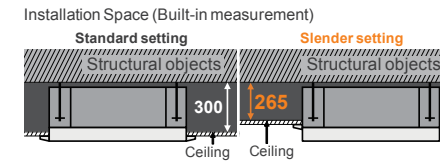
2-4 way air flow system

Select 2-way, 3-way or 4-way air flow to suit your needs.



Flexible installation

Installation is done by "Standard setting" with more than 300mm (250mm) of space. "Slender setting" lets it suitable for minimum 265mm (215mm) installation space.



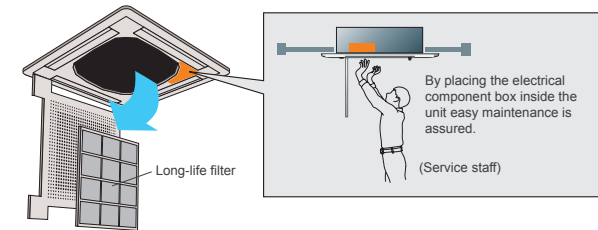
| | 25UU/30UU | 36UU/45UU/54UU |
|------------------|-----------|----------------|
| Standard setting | 250mm | 300mm |
| Slender setting | 215mm | 265mm |

Easy maintenance

The control box is easily accessible for maintenance work. Wide opening for easy access.

Detachable, washable filter and intake grille

Wide opening and long-life filter

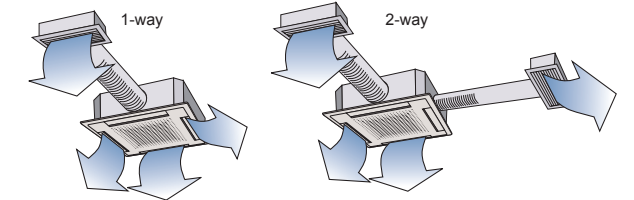


Long-life filter

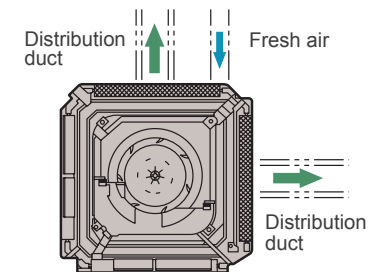
High efficiency, long-life filter extends the cleaning cycle.

Duct connection hole opening

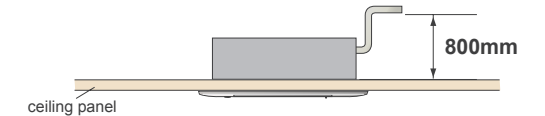
Conditioned air can be distributed by means of a distribution duct



Fresh air can be introduced through this opening



Condensate pump lift to 800mm

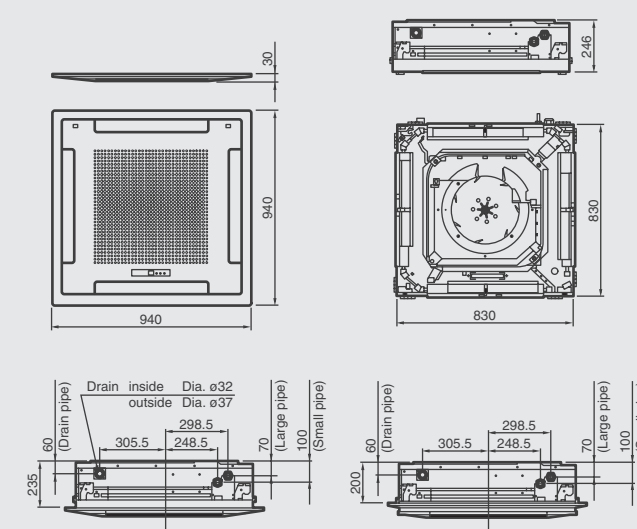


Specifications

| Model No. | Indoor unit | | AUY25UU | AUY30UU | AUY36UU | AUY45UU | AUY54UU | |
|------------------------------------|-----------------|---------|-------------------|-------------|--------------|--------------|--------------|-----------|
| | Outdoor unit | | AOY25UU | AOY30UU | AOY36UU | AOY45UU | AOY54UU | |
| Power Source | V/Ø/Hz | | 230/1/50 | 230/1/50 | 400/3/50 | 400/3/50 | 400/3/50 | |
| Capacity | Cooling | kW | 7.00 | 8.40 | 10.50 | 12.70 | 14.50 | |
| | Heating | kW | 7.80 | 9.50 | 11.80 | 14.30 | 16.50 | |
| Input Power | Cooling/Heating | | 2.65/2.35 | 2.95/2.78 | 3.48/3.65 | 4.38/4.39 | 5.16/5.30 | |
| EER - Energy Class | Cooling | | 2.64-D | 2.85-C | 3.02-B | 2.90 | 2.81 | |
| COP - Energy Class | Heating | | 3.32-C | 3.42-B | 3.23-C | 3.26 | 3.11 | |
| Running Current | Cooling/Heating | | 11.8/10.5 | 13.6/13.1 | 5.9/6.2 | 7.7/7.7 | 9.5/9.5 | |
| Moisture Removal | l/h | | 2.5 | 3.0 | 4.0 | 5.0 | 6.0 | |
| Noise (Indoor) | Cooling | H/M/L | 44/42/39 | 46/44/39 | 48/44/41 | 49/47/43 | 52/48/45 | |
| | Heating | | 53 | 53 | 54 | 54 | 54 | |
| Noise (Outdoor) | Cooling | | | | | | | |
| Airflow Rate (High) | Indoor/Outdoor | | m ³ /h | 1100/3200 | 1250/3300 | 1500/6100 | 1550/6100 | 1700/6300 |
| Net Dimension H x W x D | Indoor | mm | 246x830x830 | 246x830x830 | 296x830x830 | 296x830x830 | 296x830x830 | |
| | | kg(lbs) | 34(75) | 34(75) | 37(82) | 40(88) | 40(88) | |
| | | mm | 650x830x320 | 830x900x330 | 1165x900x330 | 1165x900x330 | 1290x900x330 | |
| Piping Connections (Small / Large) | Outdoor | mm | 9.52/15.88 | 9.52/15.88 | 9.52/15.88 | 9.52/19.05 | 9.52/19.05 | |
| | | kg(lbs) | 59(130) | 69(152) | 94(207) | 113(249) | 118(260) | |
| Max Pipe Length (Chargeless) | m | | 25 | 30 | 50 | 50 | 50 | |
| Height Difference | m | | 15 | 15 | 30 | 30 | 30 | |
| Operation Range | Cooling | °CDB | 0~43 | 0~43 | 0~43 | 0~43 | 0~43 | |
| | Heating | °CDB | -7~24 | -7~24 | -10~24 | -10~24 | -10~24 | |
| Refrigerant | | | R410A | R410A | R410A | R410A | R410A | |

Dimensions

Models: AUY25UU / AUY30UU



Models: AUY36UU / AUY45UU / AUY54UU

